

FUNDRAISING  
SUPPORT FOR  
SCHOOLS

---

**FundEd**  
SCHOOL FUNDRAISING SUPPORT



# THE CHALLENGE

Securing extra funding is an increasing challenge for schools. Whether it's searching for grants, preparing bids, writing donation requests, or organising fundraising events — it all takes time and energy.

Resources that many schools simply don't have.

# THE SOLUTION

FundEd delivers expert guidance, up-to-date grant opportunities, practical tools, and personalised fundraising reviews.

Whether you're a seasoned fundraiser or just starting out, FundEd gives you the tools, knowledge, and support to succeed.

"What a brilliant resource FundEd is! For the first time in one place, you can access numerous different ideas and support on how to gain extra resources for your school – thank you FundEd!"

***Jo Marchant, Strategic Business Leader***



# FUNDED CAN

## Unlock Funding Potential:

Helping schools secure funds for projects that benefit all children, teachers, and parents.

## Boost School Morale & Community:

By turning fundraising efforts into shared successes that unite your school.

## Simplify Processes:

By providing clear, actionable guidance that breaks down fundraising into manageable, successful steps.

*Sometimes just listening and suggesting one action to get things moving ...*







## HOW FUNDED HELPS

**Comprehensive grants database:** Access the sector's most up-to-date and extensive grants information — so you never miss a funding opportunity.

**Personalised expert advice:** Receive tailored funding reviews and direct guidance, designed specifically for your school's unique needs

**Inspiring resources:** Stay informed with email alerts, enjoy exclusive offers, and benefit from our termly magazine packed with fundraising inspiration.

**Dedicated Online Platform:** Use our intuitive, fully supported platform to promote campaigns, attract sponsors, set up event pages, and create new income streams.

Filter

Key stage

▼

Region


▼

Category

▼

- ☐ Art and Design
- ☐ Buildings and Facilities
- ☐ Business and Finance
- ☐ Community
- ☐ ICT and Computing
- ☐ Design and Technology
- ☐ English
- ☐ Geography
- ☐ History
- ☐ Languages
- ☐ Maths
- ☐ Music and Drama
- ☒ Physical Education
- ☒ Playground and Outdoor
- ☐ PSHE
- ☐ Science
- ☐ Religious Education
- ☐ SEN

SEARCH



Extra-curricular projects

Small grants for community benefit and/or extra-curricular projects

Wingates Wind Farm

FIND OUT MORE



The Hedley Foundation



Small grants for c

The Hedley Found	
Amount	Generally no mo
Deadline	The committee applications six weeks before the deadline on the website for date
Areas of interest	Providing grants across the spec disadvantaged through education projects. Youth engagement behaviours with to keep young p as well as projects as well as projects ages with physical impairment and funding
How to apply	Download the application post or email w
Website	hedleyfoundati



Supporting the

FIND OUT MORE

Small grants for c

Wooden Spoon

Funding for projects t

YHA

Wooden Spoon	
Amount	No maximum amount of £5,000
Deadline	Ongoing. Allow up to fo
Areas of interest	Supporting disabled an the following: health; se equipment & facilities; education projects. Pro lives of children and yo are disadvantaged phy directly with young poo result of the activities p must be permanent an
How to apply	Complete an online Exp eligibility can be confin to application stage. Th download form the web
Website	woodenspoon.org.uk

Previously-funded school pr

- Castledon School in Wickford, Essex received £1
- Five Acre Wood School in Maidstone was award
- Manor Green School in Maidenhead received £1

Support for disadvantaged children to take part in residential trips


YHA - Support for Schools	
Amount	Varies depending on the level of need
Deadline	Ongoing
Areas of interest	Providing bursary support for eligible schools, so every child has the same chance to discover, explore and grow. Primary schools, secondary schools, special schools, schools offering alternative provision or colleges in areas of high social deprivation or with more than 30% of children attending the trip in receipt of pupil premium or free school meals can apply. The bursary can be used towards payment for a school residential with an overnight stay (with or without catering and activities) at any YHA-owned hostel that has availability for your preferred date, group size and requirements. Bursary support is generally only available for stays from November to February inclusive
How to apply	Apply online
Website	yha.org.uk

Previously-funded school projects:

- West Horndon Primary School received a bursary for a residential at YHA Ironbridge Coalport, ensuring that 'no child misses out'.

Search over £14 million worth of grants and access bid-writing advice and support


Advice Hub | Bid writing



Grant application checklist

Use our checklist to ensure your school has the best chance of success


FIND OUT MORE



What to do before applying for grants

Don't start that grant application yet! The best path to success is to take a step back and prepare, says grants specialist Claire Williams


FIND OUT MORE



Bid writing: Tips on writing a winning grant bid

School income generation expert Justin Smith has five tips to create a compelling grant bid


FIND OUT MORE



10 steps to grant success

Make sure your school's application stands out from the crowd


FIND OUT MORE



Write a successful grant bid

Bid-writing expert Justin Smith shares his tips for grant income success

FIND OUT MORE



Bid-writing DO's and DON'Ts

These essential tips will help you craft a compelling application

FIND OUT MORE



## Fundraising Review

School Name			
Contact name			
Position			

### School plans and situation

A small church primary school of 109 pupils.

They are looking to fundraise for:

- A 9-hole mini golf area for the children to enjoy as part of our Everyday A
- Requiring £5000 to £8000
- A slide for the school field/playground – ideally built into a mound/grout
- slide, creating a lasting i
- £15000

### Getting Started

Fundraising is about telling a stc

impact that their support can h

Focus on benefits and outcome

Your situation will determine th

you are located, the type and si

be influenced by the resources i

time you have and your previou

It is worth reviewing previous ci

Based on your location and situ

you may find it more difficult to

crowdfunding, gaining business

you.

You have PTA, which is a real p

might well be able to help in ot

or research potential grants and

### Sponsorship and business support

You may already have businesses you work with and hopefully there will be others you can approach. Many business would like to work with schools but are unsure of what support school need or who to approach.

Whoever you approach:

- Outline what you are aiming to do/buy
- Why it's needed and the positive outcomes for the children
- How the company can help achieve these outcomes
- Provide options in terms of support you are looking for, money, resources, raffle prizes, affiliate relationships.
- Demonstrate value for money and benefits to the company

interested in reaching the wider school as a partner, perhaps suggest a regular donation at for in exchange for recommendations. Local

rs, accountants etc may be more inclined to put setting up a Regular Giving page and use our ting. These companies will also use any campaign

### Grants

You are seeking funding for the installation of a 9-hole mini golf area and slide at your small village primary school, to improve the school's outdoor provision, support pupils' well-being, active play, and social development and inspire an interest in golf, a sport many may not otherwise experience. The total amount you need to raise could range from £15,000 to £23,000. You would like to raise the funds and have the project completed within the 2025/6 school year.

As larger grants are few and far between, and tend to have longer application processes, it is recommended you apply to a number of grants, either for a contribution to the overall project, or for fund proposed works. Check each funder's guidelines, as some will be whole project and others will want to see their award being spent looking at grant opportunities, consider your organisation and an application deadline and time you will need to allow for the funds

Providing funding that will enable children to develop physically a outdoor environment is an attractive prospect for many funders, will add strength to your application(s).

A good place to start when seeking grants is local funders. These i invested in your local community and improving the wellbeing of funders.

With a bit of online research, you should be able to find funders i for the name of your borough or local area and "grant" or "philant some results. They won't all be i want for schools, but there m education or young people. Looking at your school website, it ap good news [ap](#). If not offering grants directly to educational establ support your PTA. As well as a general internet search, here are:

- Rotary or Lions Clubs - may offer funding or initiatives wit
- Voluntary action organisations or your local Council for Vi
- grant alerts or newsletters
- Local Councils - may offer their own funding or provide di
- Philanthropic trusts specific to your local area
- Local retailers or businesses that have an established gre
- Housebuilders that have development sites locally to you
- Construction, building at Hopes Meadow.

[Funding For All](#) offers fundraising support and grant leads for orgs Kent County Council has a [Community Grants and Funding](#) page v

### Widen the Net

There are lots of funders who will favour organisations in a specif county, region, or area, based on a radius around their location.

- Police force - some forces offer Police Property Act Fundi
- confiscated property
- Wind or solar farms
- Landfill sites
- Airports

The last three all tend to have charitable foundations or spending within or impacted by their areas of operation. A lot of the windf:

### General Fundraising

These can be divided into two areas, event fundraising and non-event or passive income streams, but can include a third area curriculum linked.

Event fundraising is mostly run by a PTA but schools without PTAs can also run events. These can be whole school celebrations, such as Grand Balls or Summer Fairs, Child focused like discos, or parent orientated such as quiz nights.

These events can be both income generators and help bring together the school's community as well as creating memories for children. They can also raise the profile of the school in the wider community, helping to promote the school and reach potential new supporters.

There are also companies that will come in a run a fundraiser for you.

We recommend:

**Prostrike** - a terrific football fundraiser, where pupils get the chance to have the speed and power of their kick measure in pop-up goal. Its great fun involves the whole school and the company involved mange everything - plus you can raise lots of funds. Email [pta@prostrikevents.co.uk](mailto:pta@prostrikevents.co.uk) for an information pack.



Passive income streams are often overlooked but can be useful as once established they can tick over without too much effort. These can include, recycling schemes, 100 clubs, lotteries, and affiliate fundraising.

Curriculum based fundraising can help schools raise funds within the classroom or school environment and can include such things as Christmas card projects, readathons or book fairs. These can be organised by staff within the relevant departments.

Our sister site [www.PTA.co.uk](http://www.PTA.co.uk) is packed with advice and inspiration.

### Marketing and PR

The impact and outcomes outlined earlier should be at the heart of PR messaging - spreading the word across the school and wider school community.

Fundraising and partnerships should be included in general marketing and be used to promote the school in general. Also, good marketing and PR will help future campaigns as will highlighting successful campaigns and continue to demonstrate impact.

# Ask us to review your school.....

## Tailored Fundraising Reviews



Relevant grants matched to your school



Alternative fundraising strategies



Sponsorship & business support letters



Marketing advice for every stage

*“The review you prepared is super helpful, and I feel the information and advice will really support our fundraising efforts.”*

– Hannah Juden,  
Five Acre Wood Primary



# School fundraising

AUTUMN 2025

**BUMPER EVENT SUCCESS SPECIAL**  
From a Halloween disco to a half-term hooden, we reveal what worked for six PTAs and schools

## GRANTS

**How to make videos for grant applications**  
Your smartphone is a game changer!

## FUNDRAISING

**'With the help of alumni parents, our car boot sale raises £70,000 a year'**

## CHRISTMAS

**Boost your coffers with our fundraising quick wins!**

Why funding education in food and nutrition provides skills for

**YOUR AUTUMN EVENTS FLOWCHART**  
Find your way

**GRANTS - Grants for schools**

**FIND OUT MORE!**  
Grants sometimes change. Get the fund's database for the latest information  
[funded.org.uk/grants](https://funded.org.uk/grants)

## FOOD GLORIOUS FOOD

## Grants for schools

Sarah Everson rounds up grants for food and nutrition, from learning where food comes from and the science behind growing it to appreciating the energy boost it provides to fuel our bodies

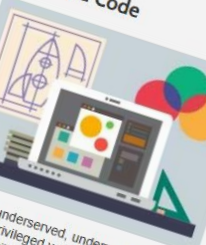
Funder	Grant value	Grant deadline	Details
Tesco Stronger Starts	£50k, £1,000 or £1,500	Ongoing. New charities are selected every three months	Tesco Stronger Starts grants are voted for by the public via blue areas of the UK for science resources and gardening equipment, clubs, healthy eating projects and food growing areas. You can be nominated, or apply online at <a href="https://tescostrongerstarts.org.uk/">tescostrongerstarts.org.uk/</a>
Edina Trust	£400 or £800	There is a final deadline at the end of the academic year	The Edina Trust offers non-competitive grants to schools in selected areas of the UK for science resources and gardening equipment, clubs, healthy eating projects and food growing areas. You can be nominated, or apply online at <a href="https://edinastrust.org.uk/science-grants/">edinastrust.org.uk/science-grants/</a>
The Tree Council	An orchard or fruiting hedgerow pack and supporting resources	Usually in January. Register your interest on the website to be notified of dates	Apply to the Tree Council's Orchards for Schools programme and you can receive a fruit-bearing, wildlife-enhancing orchard in a school or garden. The programme is open to all schools and nurseries. For more information, visit <a href="https://www.treecouncil.org.uk/grants-and-guidance/orchards-for-schools/">www.treecouncil.org.uk/grants-and-guidance/orchards-for-schools/</a>
Department for Education via Family Action	75% subsidy for breakfast club provision	The scheme is due to run until the end of the 2025/26 school year	The National Breakfast Programme supports schools in England to provide children with a healthy breakfast at the start of the school day. Schools that have won a grant or are in receipt of a grant from the Department for Education can apply for a grant to fund the programme. For more information, visit <a href="https://www.national-school-breakfast-programme-nbsp.org.uk/">www.national-school-breakfast-programme-nbsp.org.uk/</a>
Savvy Educational Trust	Grants are typically between £500 and £50,000	Three per year. The next deadline is 21 October 2025	The trust's focus is to advance education, skills and understanding in subjects relating to the hospitality industry, including grants for food technology. Projects that have received funding in the past include the refurbishment of a food technology room at a secondary school, and a cooking initiative at a primary school. Apply at <a href="https://savvyeducationtrust.org.uk/how-to-apply">savvyeducationtrust.org.uk/how-to-apply</a>
Food for Thought	Up to £3,000	Annual, usually in June	Available to local authority schools in Scotland, this fund is for the trust's focus is to advance education, skills and understanding in subjects relating to the hospitality industry, including grants for food technology. Projects that have received funding in the past include the refurbishment of a food technology room at a secondary school, and a cooking initiative at a primary school. Apply at <a href="https://savvyeducationtrust.org.uk/how-to-apply">savvyeducationtrust.org.uk/how-to-apply</a>

## Grants update

Maximise your funding with the latest grants

If you're seeking funds to top off the academic year, or looking ahead to the autumn here are a handful of opportunities you could explore. Plus, don't forget we have a wealth of grants for schools and PTAs listed on the FundEd website.

Meet and Code



UK-Japan relations

BONJOUR

NI HAO

Empower underserved, underrepresented and underprivileged young people aged eight to 24 with digital skills with a £400 grant from Digital. Funding can be used for coding workshops lasting at least four hours and can cover the cost of purchasing technical equipment or hiring a trainer for the day(s). Schools and PTAs with registered charity status can apply from 10 June 2025.

The Great Britain Sasakawa Foundation promotes mutual understanding and cooperation between the UK and Japan by contributing funds for activities across a wide range of themes. Project costs can be funded, not core or capital costs. Grants can be for up to £5,000. Download the application form from the website and apply by 15 September 2025.

## Update

Our latest fundraising ideas and resources

School Fundraising magazine | Grants database | Find a supplier

# WIN £1,000 FOR YOUR SCHOOL'S LIBRARY



NATIONAL BOOK tokens  
In association with  
Read for Good

## to win £1,000 and encourage reading for pleasure!

For pleasure leads to significantly better outcomes for performance, enhancing wellbeing and fostering vital life skills in seven primary schools has no library space, and those that often contain old, unappealing books. Children facing poverty

**Grants focus: Moto Foundation**  
The Moto Foundation is a charity that provides grants to schools to support their library provision. The foundation has a £1,000 grant available to schools that have no library space, and those that often contain old, unappealing books. Children facing poverty

**Grants focus: Moto Foundation**  
The Moto Foundation is a charity that provides grants to schools to support their library provision. The foundation has a £1,000 grant available to schools that have no library space, and those that often contain old, unappealing books. Children facing poverty

**Grants focus: Moto Foundation**  
The Moto Foundation is a charity that provides grants to schools to support their library provision. The foundation has a £1,000 grant available to schools that have no library space, and those that often contain old, unappealing books. Children facing poverty

**Grants focus: Moto Foundation**  
The Moto Foundation is a charity that provides grants to schools to support their library provision. The foundation has a £1,000 grant available to schools that have no library space, and those that often contain old, unappealing books. Children facing poverty

**Grants focus: Moto Foundation**  
The Moto Foundation is a charity that provides grants to schools to support their library provision. The foundation has a £1,000 grant available to schools that have no library space, and those that often contain old, unappealing books. Children facing poverty

**Grants focus: Moto Foundation**  
The Moto Foundation is a charity that provides grants to schools to support their library provision. The foundation has a £1,000 grant available to schools that have no library space, and those that often contain old, unappealing books. Children facing poverty

**Grants focus: Moto Foundation**  
The Moto Foundation is a charity that provides grants to schools to support their library provision. The foundation has a £1,000 grant available to schools that have no library space, and those that often contain old, unappealing books. Children facing poverty

**Grants focus: Moto Foundation**  
The Moto Foundation is a charity that provides grants to schools to support their library provision. The foundation has a £1,000 grant available to schools that have no library space, and those that often contain old, unappealing books. Children facing poverty

**Grants focus: Moto Foundation**  
The Moto Foundation is a charity that provides grants to schools to support their library provision. The foundation has a £1,000 grant available to schools that have no library space, and those that often contain old, unappealing books. Children facing poverty

**Grants focus: Moto Foundation**  
The Moto Foundation is a charity that provides grants to schools to support their library provision. The foundation has a £1,000 grant available to schools that have no library space, and those that often contain old, unappealing books. Children facing poverty

**Grants focus: Moto Foundation**  
The Moto Foundation is a charity that provides grants to schools to support their library provision. The foundation has a £1,000 grant available to schools that have no library space, and those that often contain old, unappealing books. Children facing poverty

**Grants focus: Moto Foundation**  
The Moto Foundation is a charity that provides grants to schools to support their library provision. The foundation has a £1,000 grant available to schools that have no library space, and those that often contain old, unappealing books. Children facing poverty

# Be inspired & informed with termly magazines, newsletters and grant updates

Fun ideas, practical advice and inspiration for generating funds

# Fundraising



ENRICHMENT - Suppliers

## Enrichment inspiration

**Get with the Program**  
Cross-curricular coding workshops that bring programming to life with a mix of storytelling and performance.

**Sports Coaching Group**  
A covered and heated pop-up swimming pool, brought to your school with fully insured instructors and lifeguards.

**ClassVR**  
ClassVR is a complete solution for virtual reality in the classroom.

**Magical Maths**  
Mind-blowing after-school maths club.

**Big Wheel Theatre Company**  
Interactive shows performed entirely in French or Spanish.

**Rocksteady Music School**  
The leading provider of in-school band lessons for primary age children.

**The Outdoors Project**  
Adventurous activities from bushcraft and survival skills to learning about Vikings and Stone Age tool-making.

**Dance Days**  
Fun and exciting school trip with access to educational workshops and sessions

**Next Generation Travel**  
Award-winning school tours from education travel experts.

**North Yorkshire Moors Railway**  
A unique educational adventure which winds through the North Yorkshire Moors National Park.

**Architecture Workshops**  
Hands-on activities for all key stages and abilities. Making learning fun, the complex simple for over 25 years.

**Immersive Theatres**  
Bringing the thrill of space and the wonder of the night sky to schools, using engaging presenters and modern 360° production technology.

**Life Science Centre**  
Add a little 'wow' with hands-on workshops in real life labs at Newcastle's International Centre for Life.

**Speedkix**  
Exciting activities to improve confidence, resilience, mental health and wellbeing.

**The Nerf Guys**  
The Ultimate Nerf Battle Experience brings the excitement of Nerf wars to your school, with access to educational workshops and sessions



# Supporting Milking Bank School

Share Page

## About

Our FundingWall will help us raise awareness for our fundraising campaigns, organise events and thank our supporters.

[school website](#)

## Current Campaign

### Supporting our Sensory Garden

Please help us raise funding to create a Sensory Garden.



Find out more

## Fun, Fun, Fun

### Upcoming Events

This page will be feature upcoming events for this term and beyond.



Find out more

## Enrichment Support

### School Community Fund

If you are a local business or school supplier we would love you to help us build our School Community Fund.



Find out more

## Community Hub

### At the heart of our community

We are proud to link with businesses and the wider community. Whether small local or larger and international there are opportunities for you to partner with us.



Find out more

## Monthly Cash Prize

### Join Our School Lottery!

Join our monthly lottery and support our fundraising while being in the running for exciting cash prizes.



# Raise more online and make some noise

## Funding Wall

**A dedicated hub:** For all your fundraising campaigns and projects,

**Streamlined donations:** Easily collect one-off donations from supporters.

**Recurring giving:** Cultivate sustainable income streams through recurring donor contributions.

**Event management:** Seamlessly plan, promote, and sell tickets for school events.

**Prize draws:** Set up 'member lotteries' and online raffles to engage your community and generate excitement.

**Community pages:** To showcase and thank sponsors and strengthen relationships within the local community.





# Supporting our Sensory Garden

[Single donation](#)[Regular donation](#)[Share Page](#)

## About

Please help us raise funding to create a Sensory Garden.

For children who are hyper-reactive to sensory stimuli, then sensory gardens will offer an opportunity to explore the five senses in a safe, controlled environment, without overwhelming them. For children who are under-reactive, a sensory garden can help them experience sight, sound, touch, taste and scent in a healthy, positive way. This will support all children in the two Shining Stars Hubs within school.

Sensory gardens are also a brilliant all-around teaching tool since children learn best when they're fully engaged, and a sensory garden does exactly that. Sensory gardens can teach children about the five senses and gives them the chance to explore plant life cycles, learn about the seasons, growth, and study insects and other wildlife up close.



## Supporting

### Supporting Milking Bank 🏠

Our FundingWall will help us raise awareness for our fundraising campaigns, organise events and thank our supporters.

[school website](#)

### Sustainable Sensory Garden - Supporting Milking Bank



Milking Bank Primary School is raising money to create a sensory garden which stimulates all the senses, particularly the five basic senses of sight, smell, sound, taste and touch. The type of garden which connects children to their natural surroundings, encouraging relaxation and mindfulness, especially for children who find self-regulation challenging.

This will be achieved through the use of plants, flowers, light and sound to create a completely immersive experience.

This will be beneficial to both children and adults, especially those who have sensory processing issues and complex educational needs. It will also provide a perfect project for our eager JASS Award attendees.

**£1,095.00 raised by 9 supporters**  
£1,095.00 donated

## ♥ Donations

Anonymous Fri, February 14 2025,  
3:05 PM

£150.00

Anonymous Thu, January 16 2025,  
6:45 AM

£20.00

Anonymous Tue, December 17  
2024, 11:50 AM

Durbia are delighted to support this  
fantastic initiative

£250.00

Anonymous Wed, November 27  
2024, 1:28 PM

£20.00

Anonymous Wed, November 27  
2024, 7:01 AM

Match Funding Payment

£500.00

Anonymous Thu, November 21  
2024, 3:24 PM

£10.00

Anonymous Wed, November 20  
2024, 1:44 PM

£30.00

[Click for more results](#)

# Join Our Lottery!

[Get Tickets](#)[Share Page](#)

## About

We are excited to announce the launch of our new exclusive Willowbank Primary Members' Lottery!

...PLEASE READ ON AND REGISTER IF YOU CAN!

The Lottery has been put together as a great way to raise vital funds for the school, whilst at the same time giving members the opportunity to win a cash jackpot every month. We are looking to get as many people to join the Lottery Club as possible so ask that you please consider signing up yourselves, as well as sharing the attached flyer with as many other people as possible. The more people that enter, the bigger the cash jackpot every month and the more funds raised for the school to help provide opportunities, equipment, and activities for the children of our school...so WIN WIN!

It is a fantastic way to help make a real difference to the fundraising efforts of the school without any time commitment or volunteer responsibility! Asking extended family members, neighbours, and friends to take part in the Lottery gives those people who want to help support students they know an easy and hugely beneficial way in which to do so.

It only takes a few minutes to sign up to the Lottery and a direct debit for £5.00 per calendar month is all the tickets cost, and the jackpot each month will be 40% of the profits the PTA makes from the money taken. Throughout the year additional prizes will feature as well as the cash jackpot, such as tickets to local attractions, restaurant vouchers, and gifts.

Draws will take place on the 1st of every month, digitally run automatically, and the winner(s) notified straight away to arrange transferring prize money directly into your bank account.

PLEASE DON'T DELAY, SIGN UP, SHARE AND SPREAD THE WORD TODAY!

Thank you very much,



## Supporting

### Willowbank Primary 🏠

Our FundingWall will help us raise awareness for our fundraising campaigns, organise events and thank our supporters.

[school website](#)

## Next draw

The next draw will take place at the end of day 31st October 2025, covering everything from 1st October 2025 to 31st October 2025.

**£5.00 per members  
lottery ticket**

## Prizes

### Cash Prize

40% of the funds raised through the lottery each month.

There will also be additional prizes some months as well! The more people that join, the greater the fund, and some months there may be a chance to win other prizes such as tickets to local attractions, discount vouchers for local venues and other gifts.

# School Community Fund

[Single donation](#)[Regular donation](#)[Share Page](#)

## About

**If you are a local business or school supplier we would love you to help us build our School Community**

👉 Become a Community Partner 👉

We're inviting local businesses and school suppliers to help us build our School Community Fund—a vital initiative to enrich school life and ensure every child gets the most out of their time with us.

By donating just £10 a month, you'll become one of our valued Community Partners, supporting projects that bring joy, learning, and opportunity to our pupils.

🎨 Current Project:

We're creating a mini-golf course and slide for our outdoor play area—bringing fun, exercise, and skill-building to every break time.

🌟 Join us today and make a lasting impact.

Every contribution helps build a stronger, more vibrant school community.

Thank you for your support!



## Updates

Thank to all our wonderful local business for supporting our community fund.



Updated on Tue, September 9 2025, 11:58 AM



Would you like  
FundEd to help your  
school?

A whole-school subscription for  
a year is £75.

My email:  
[Richard.Manville@communityin  
spired.co.uk](mailto:Richard.Manville@communityin<br/>spired.co.uk)

To sign up: [FundEd.org.uk](https://FundEd.org.uk)